



ETWALL PRIMARY SCHOOL

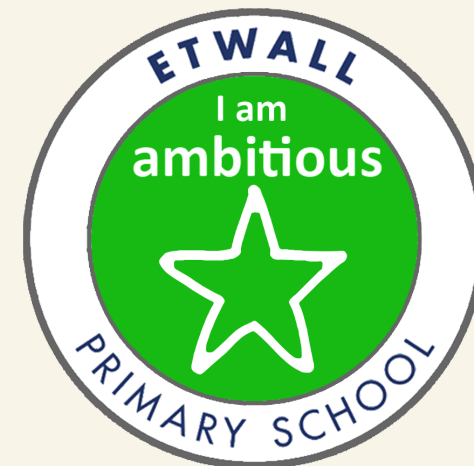
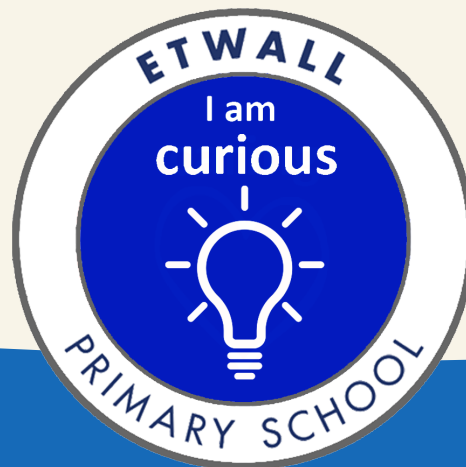


WELCOME TO ETWALL



# OUR SCHOOL VALUES

Our vision is that each child at Etwall Primary School will know the wonder and excitement of new experiences. They will develop the skills and knowledge to make the most of each new opportunity and have the confidence to seek their own adventures as caring, curious and ambitious individuals.



# WHO'S WHO?

Our school leadership team are:

Headteacher  
Mrs Bentley

Deputy Headteacher  
Mr Ormiston

EYFS Lead  
Mrs Toynebee

Curriculum Lead  
Mrs Bradley

SENCO  
Mrs Giles



Mrs Bentley



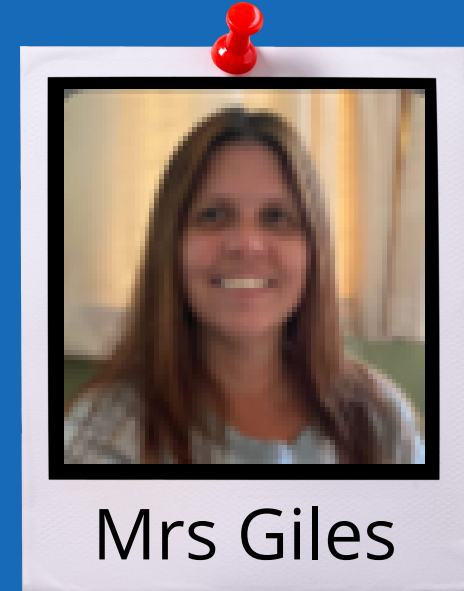
Mr Ormiston



Mrs Toynebee



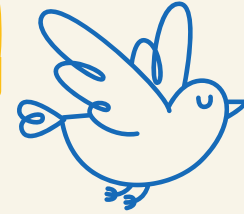
Mrs Bradley



Mrs Giles



# CLASSES



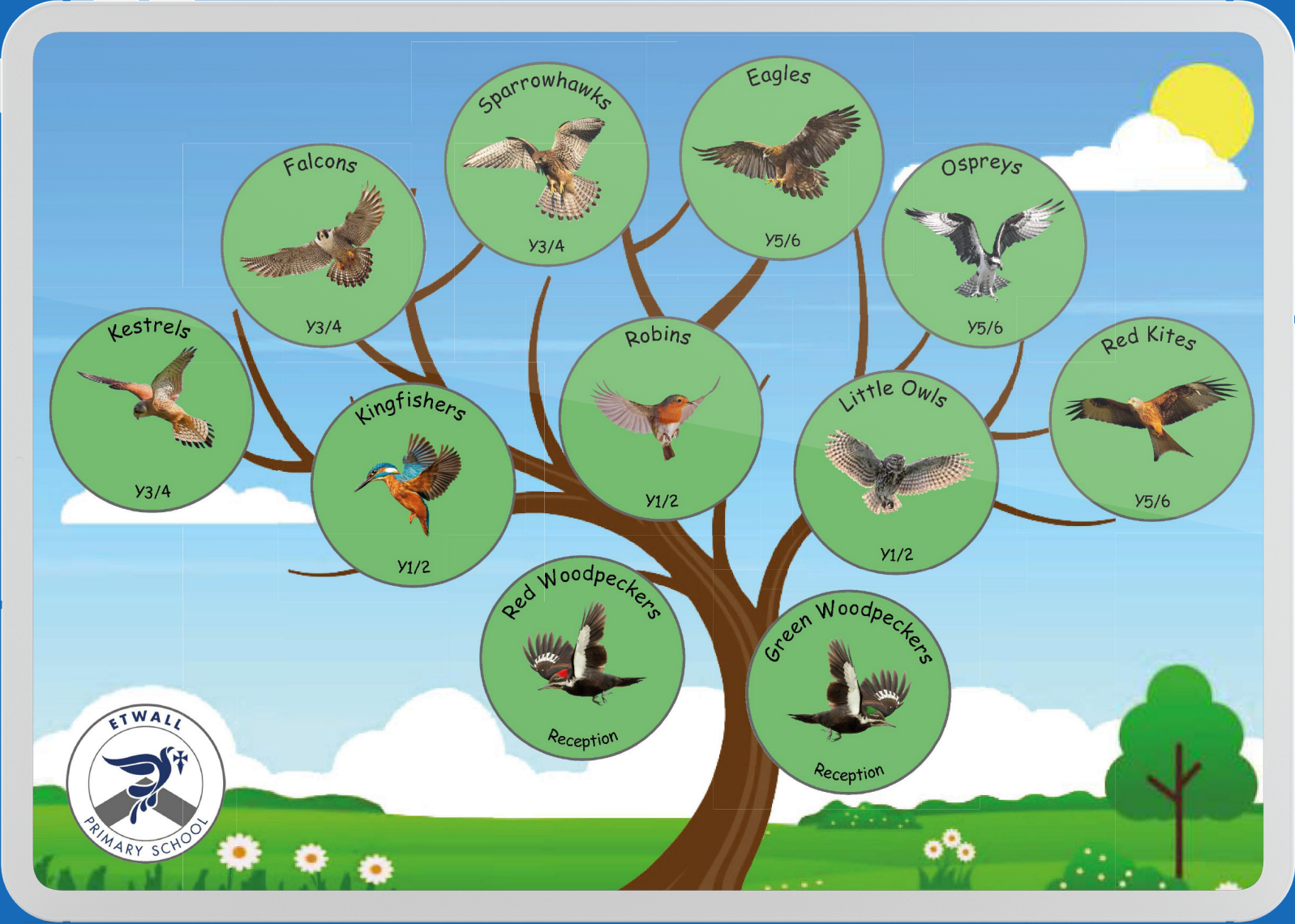
Our classes are all named after birds.

We have one Reception class base, Woodpeckers, with two class teachers.  
Across the rest of the school there are two year groups in each class, and three classes within each 'keystage' group

**Robins, Little Owls and Kingfishers are our Y1/2 classes (keystage 1)**

**Kestrels, Falcons and Sparrowhawks are our Y3/4 classes (lower keystage 2)**

**Red Kites, Eagles and Ospreys are our Y5/6 classes (upper keystage 2)**



Kestrels  
Y3/4

Falcons  
Y3/4

Kingfishers  
Y1/2

Red Woodpeckers  
Reception

Robins  
Y1/2

Sparrowhawks  
Y3/4

Eagles  
Y5/6

Green Woodpeckers  
Reception

Ospreys  
Y5/6

Little Owls  
Y1/2

Red Kites  
Y5/6

# SCHOOL DAY

Gates open: just before 8:45am

Gates close: 8:50am

(after this time your child will need to come to the school office)

KS2 lunch: 12 - 1pm

EYFS and KS1 lunch: 12:30 - 1:30pm

School finishes - 3:15pm



At the end of the day, each class has its own exit point. Try and stand in a similar place every day and give the teacher a quick wave when your child is next in line.





# WRAPAROUND CARE

Wraparound care is provided by Active Bodies. They are based in The Nest which is the larger building on the middle playground.

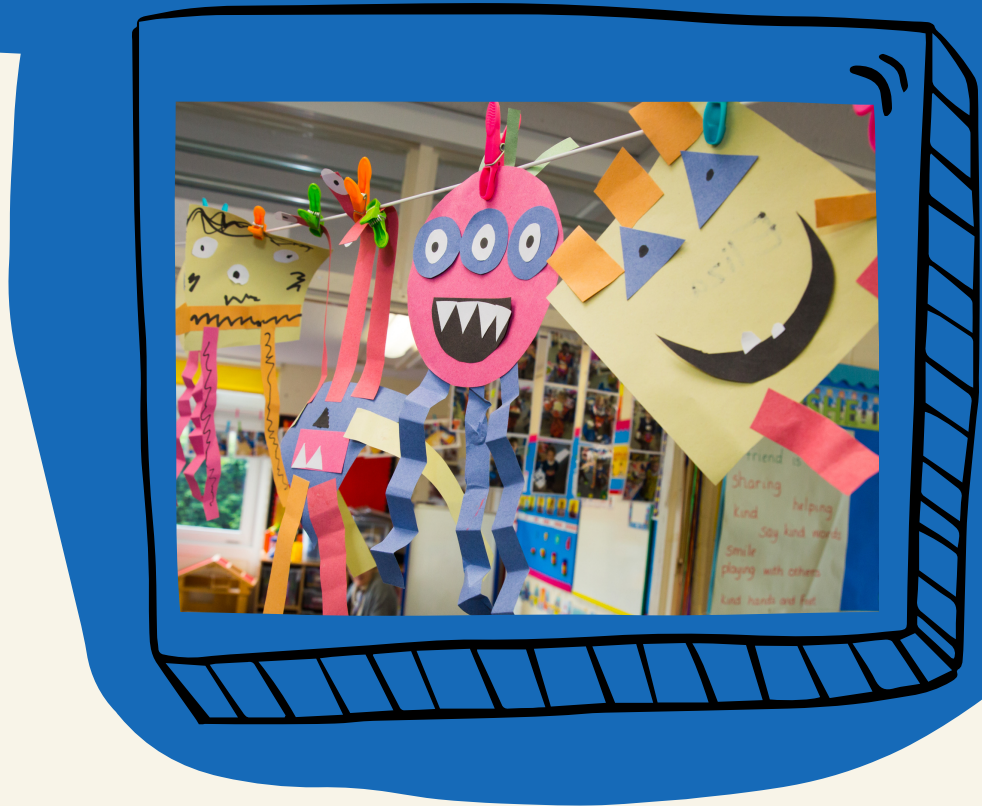
Morning: 7:30am - school start

Afternoon: school close - 4:30pm or 5:30pm

Contact them on:

[Epsmanager@activebodiesuk.co.uk](mailto:Epsmanager@activebodiesuk.co.uk)

07707 762494



Alternatively, please ring school and press 'option 3' to be connected during wraparound hours.





# ENRICHMENT CLUBS

We believe that it is important that children extend their interests and talents as much as possible outside of the classroom.

Therefore, we offer a range of clubs that run after school or at lunchtime by our own school staff. These include:

- |                       |                              |
|-----------------------|------------------------------|
| <b>Lego Club</b>      | <b>First Aid Club</b>        |
| <b>Story Club</b>     | <b>Fantasy Football Club</b> |
| <b>Gardening Club</b> | <b>Cookery Club</b>          |
| <b>Code Club</b>      | <b>EYFS Games Club</b>       |



We also use a range of external providers to help us in our aim of catering for all interests and all ages.





# REWARDS AND RECOGNITION

Etwall Primary School promote good behaviour through praise, encouragement and through restorative practice. Our aim is to show every child that their efforts are recognised. This may be done by quiet praise, sharing good work or behaviour with another teacher or receiving praise from the headteacher or in a celebration assembly.

It is also important to teach children that their choices have consequences and that these are sometimes far-reaching. This is why we use a restorative approach where we teach child the impact of their actions and encourage them to be empathetic to others and to fix their mistakes.

# OUR SCHOOL RULES

We have three simple rules that all children are expected to follow at Etwall Primary School. We love to celebrate children making great behaviour choices in our weekly celebration assemblies.



# HOW WE LEARN

We believe that children learn best when they are in an environment where they feel safe and their imagination is stimulated. This is why we work really hard to ensure that all of our classrooms engage our pupils.

Our topics are designed to engage a wide range of learners but are flexible and will sometimes be adapted to match the interests of the current pupils. We link our trips to the topics and we use them to help us to know more and remember more.

We use technology and the outdoors to enhance our learning. Practical equipment is used to support understanding and ensure that all are engaged in hands on learning experiences.



# FOR FURTHER INFORMATION...



01283 732301



info@etwall.derbyshire.sch.uk



<https://www.etwall.derbyshire.sch.uk>

