

ETWALL PRIMARY NEWSLETTER

SPRING 2

THIS WEEK

WED 20TH

THURS 21ST MARCH -
PARENTS' EVENING

FRI 22ND MARCH - NON-
UNIFORM IN RETURN FOR A
CHOCOLATE EGG (FOR
CHOCOLATE BINGO)

PLEASE NOTE - WE HAVE CANCELLED
THE DECORATED EGG COMPETITION.
THE FOREST SCHOOL AREA IS NOT
SUITABLE TO COLLECT THE DECORATED
EGGS AND WE HAVEN'T THE SPACE
ANYWHERE ELSE IN SCHOOL EITHER!

Hasn't this term flown? We are now more than half-way through the school year and our young learners are busy showing us their best work and their best efforts.

This week sees teachers busily preparing for parent consultation evenings on Wednesday and Thursday so that they can show you all that your children have achieved so far and share their next steps in learning with you.

We had a fabulous world book day in school. As always, it was wonderful to see children dressed up as their favourite characters and swapping books. Thank you to Mrs Bradley for organising such a great day! For those that have returned the Blue Peter badge forms, we now eagerly await the arrival of the badges. Please be aware that these may take up to 12 weeks to arrive and will arrive in several different deliveries, according to our inside info!



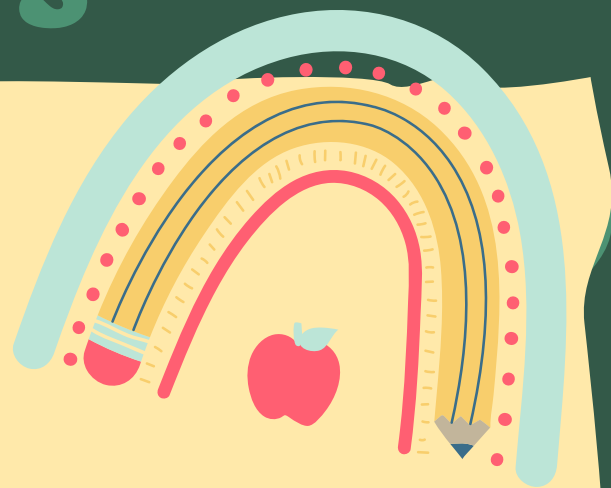
STAFFING NEWS

We are pleased to let you know that Mrs Dhillon is preparing to return to school in May. Her treatment has finished and has gone really well. Her focus is now on looking ahead and making sure that she is fighting fit. She is looking forward to seeing children and families again very soon!

Sadly, Ms Thomson (known as Mrs Dawson to many of you!) will not be returning. Although teaching is her first love, her physical health means that this is just not possible at the moment.

Mr Ormiston will also not be returning to school after his recent absence. He is off to pursue different adventures beyond Etwall.

We have loved working with them and they will both be missed. We thank them for all of their contributions to Etwall Primary and wish them well for the future.



Good Luck!



Term Dates

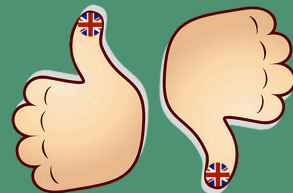
- Thursday 28th March - last day of spring term
- Monday 15th April - Summer term begins
- Monday 3rd June - Inset Day
- Friday 19th July - Final day of school year

BRITISH VALUES

Promoting British Values are a central part of teaching and learning and are promoted throughout the curriculum and across the school. Below are some examples of how we promote these values at Etwall Primary.

Democracy

Children's views count and are valued at EPS. From EYFS upwards, children are encouraged to make decisions together, whether this is a class vote to choose a story or voting for their school council/committee class representatives.



DEMOCRACY

Rule of Law

We discuss the need for rules and laws to keep us all safe and happy. We teach children to distinguish right from wrong and the consequences of actions. We help children to understand that rules must be administered fairly and that they are there for us all to follow.



RULE OF LAW

Tolerance and Respect

We provide opportunities for the children to make links with the wider community and to learn about other faiths, cultures, traditions and ways of life. Our visit to the Open Centre is another way that children learn about the world and communities around them. We encourage children to show respect for the customs of different religions by visiting their places of worship and learning about their beliefs.



RESPECT OTHERS' BELIEFS



MUTUAL RESPECT

Individual Liberty

Ensuring that children develop their self-esteem and confidence in their abilities is really important to us. We enjoy celebrating successes in assemblies and help children to develop a positive sense of themselves. Our assemblies regularly feature themes of diversity and celebrating individual differences. We actively promote the message that children have the freedom to choose their beliefs, their likes and their dislikes and use stories and activities to challenge stereotypes and discrimination.



INDIVIDUAL LIBERTY

OUR VISION IS THAT EACH CHILD AT ETWALL PRIMARY SCHOOL WILL KNOW THE WONDER AND EXCITEMENT OF OPENING DOORS TO NEW EXPERIENCES. THEY WILL DEVELOP THE SKILLS AND KNOWLEDGE TO MAKE THE MOST OF EACH NEW OPPORTUNITY AND HAVE THE CONFIDENCE TO SEEK THEIR OWN ADVENTURES AS CARING, CURIOUS AND AMBITIOUS INDIVIDUALS.



AND FINALLY...

We have had lots of poorly children in recent weeks. Children in Woodpeckers, in particular, have been affected by a virus that has swept its way through the younger children.

How do we tackle this in school?

When we see that there are lots of children off poorly in a class, we increase our cleaning of 'touch-points' as our first action. This means that we ask the cleaners to pay particular focus to areas such as door handles, light switches, tables and other hard surfaces.

For our Reception children, this was recognised early last week and so the cleaners were informed and asked to prioritise touchpoints.

We increase our hygiene measures with children. Encouraging children to wash their hands more frequently, checking that they are doing so and talking about hygienic use of tissues is another important measure that we take.

After the half-term break, all staff were asked to increase handwashing opportunities and to talk to their children about good hygiene in the hope of reducing the spread of infection.

Finally, if infection rates are still high, we increase the cleaning in certain areas. The EYFS classrooms both benefited from additional cleaning at the end of last week as well as their usual daily clean.

Finally, we try and work with parents and carers to support children returning to school, knowing that children might not be fully recovered but are well enough again for school.

Unfortunately, we can't stop the spread of infection (I don't think we want any more lockdowns!), but we do all we can to minimise it and to help children to return to school when they are well enough to do so.

